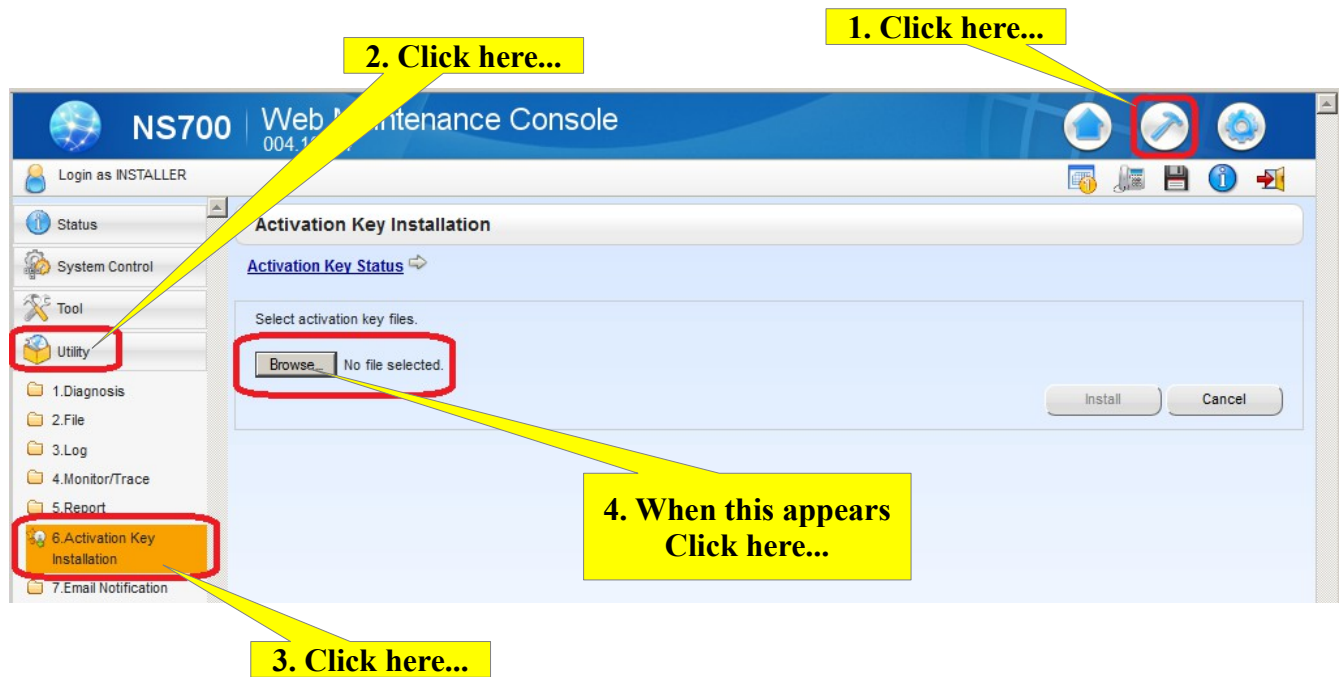
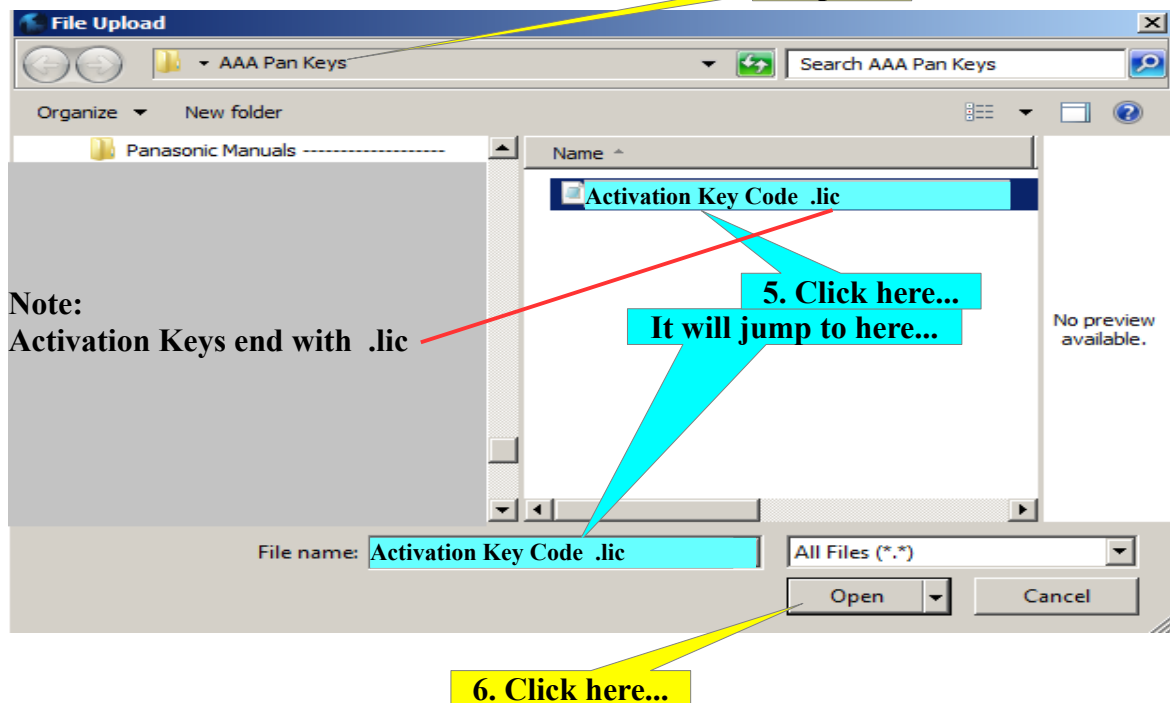
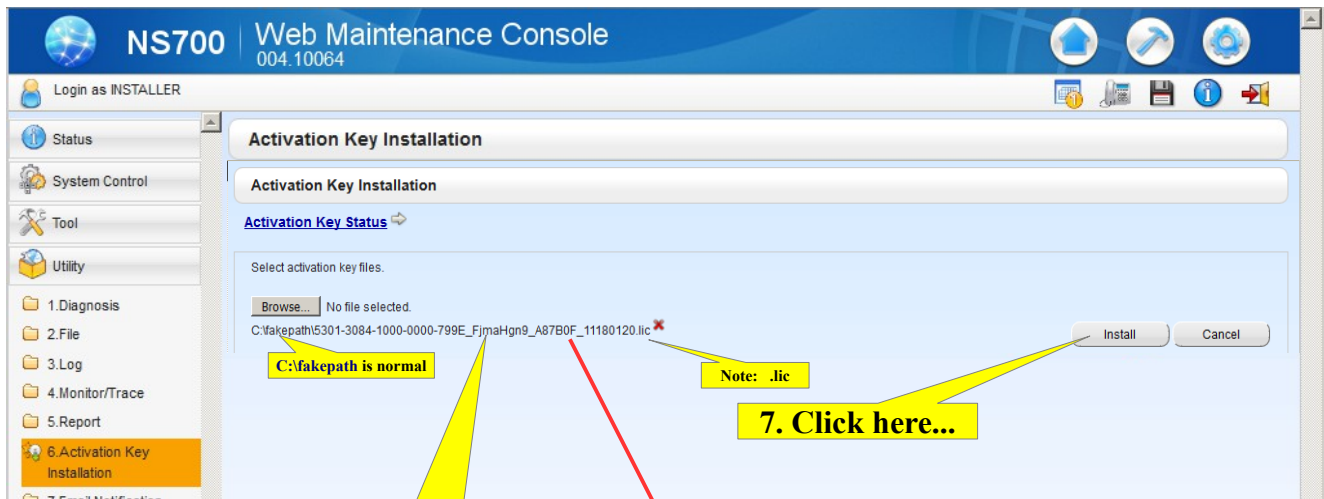


## Panasonic KX-NS700 Activation Key Installation Telquest Tech Support



This is the area where you saved the Activation Key in your **computer:**





**Note**  
This is similar to what you will see.

192.168.1.240 says  
D405010: Failed to install license.  
This may mean the MRP of the KSU and license do not match. OK

**Note:**

If you see this error message, the KSU MPR Number may not match the MPR Number that was used to register your Application Key File (license).

If Telquest did the registration for you, then call your Telquest sales rep.

If you did the registration, then you will need to look into it further.